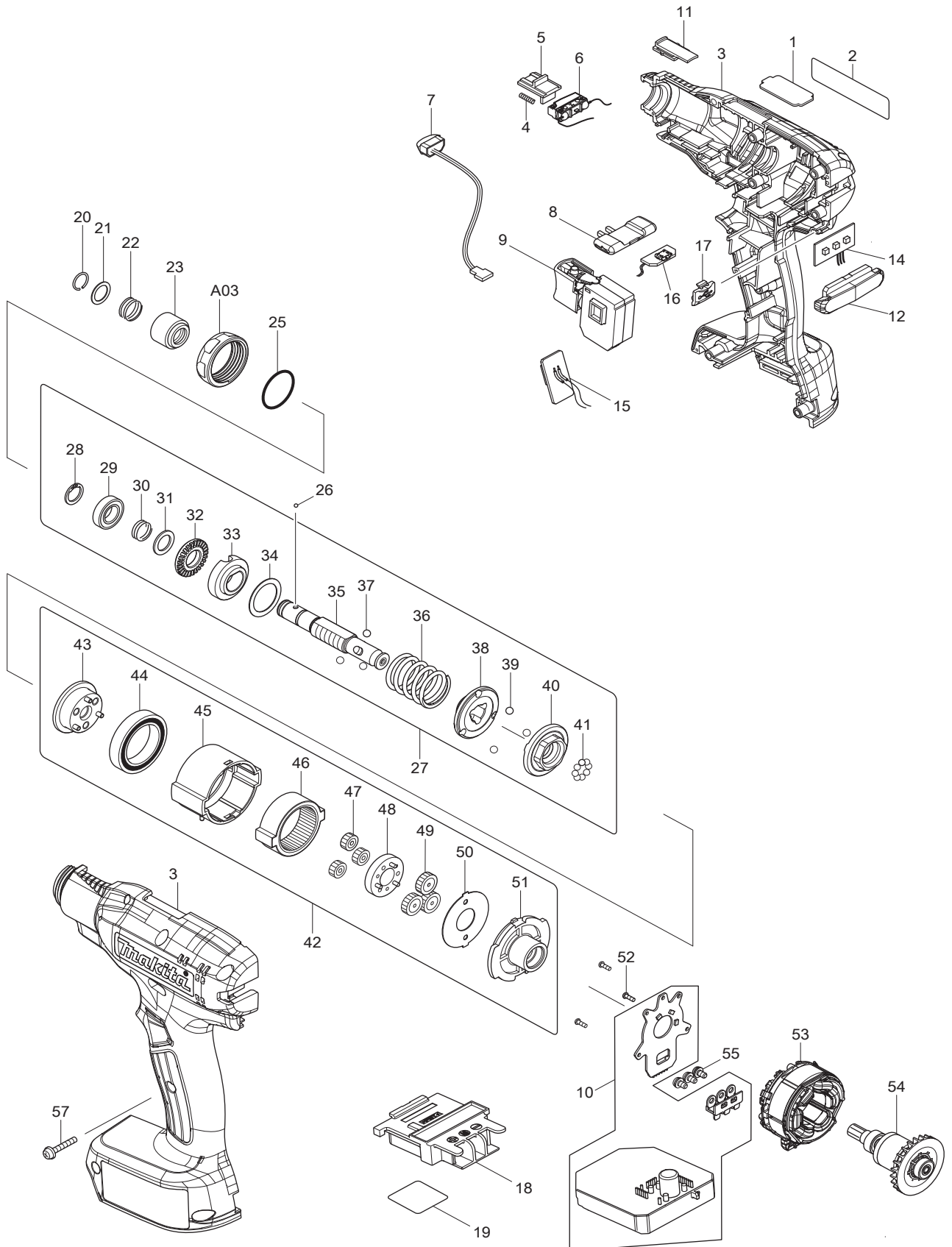




02 - 2017  
DFT045FMZ  
14.4V BL Screwdriver (1-4Nm)



Item No	Type	Sub	Part No	Description	Qty	Unit
001			345343-6	PLATE G, 1 - 4Nm	1	PC.
002			853A34-6	NAME PLATE F/DFT045F	1	PC.
		INC.	263005-3	RUBBER PIN 6	2	PC.
		INC.	931002-4	HEX NUT M3	7	PC.
003			183F88-2	HOUSING SET	1	SET
004			233025-1	COMPRESSION SPRING 2	1	PC.
005	2		458136-3	SWITCH LEVER	1	PC.
006			632K18-5	SWITCH UNIT	1	PC.
007			620521-2	LED CIRCUIT	1	PC.
008			457469-3	F/R CHANGE LEVER	1	PC.
009			651082-1	SWITCH C3JW-1B-S	1	PC.
010			620618-7	CONTROLLER	1	PC.
011			457526-7	CHANGE PLATE	1	PC.
012			457484-7	LENS	1	PC.
014			620622-6	LED CIRCUIT	1	PC.
015			620621-8	BUZZER CIRCUIT	1	PC.
016			620623-4	USB CIRCUIT	1	PC.
017			144709-5	USB COVER COMPLETE	1	PC.
018			643850-6	TERMINAL	1	PC.
019			853A37-0	SERIAL NO. LABEL F/DFT045F	1	PC.
020			233930-2	RING SPRING 9	1	PC.
021			267070-4	FLAT WASHER 10	1	PC.
022			232374-3	COMPRESSION SPRING 10A	1	PC.
023			161607-8	BIT SLEEVE	1	PC.
025			213836-0	O RING 22	1	PC.
026			216015-9	STEEL BALL 2.4	2	PC.
		INC.		Item No. 28-41		
027			123939-1	CLUTCH ASSEMBLY 4M	1	PC.
028			961026-6	RETAINING RING S-10	1	PC.
029			210076-1	BALL BEARING 6800LLB	1	PC.
030			232375-1	COMPRESSION SPRING 10B	1	PC.
031			267047-9	FLAT WASHER 10	1	PC.
032			326953-8	LOCK NUT M12	1	PC.
033			144421-7	ADJUST RING COMPLETE	1	PC.
034			253391-0	FLAT WASHER 18	1	PC.
035			326944-9	SPINDLE M	1	PC.
036			232373-5	COMPRESSION SPRING 18B	1	PC.
037			216024-8	STEEL BALL 4	3	PC.
038			223185-7	CAM A	1	PC.
039			216024-8	STEEL BALL 4	3	PC.
040			223186-5	CAM B	1	PC.
041			216001-0	STEEL BALL 3.5	8	PC.
		INC.		Item No. 43-51		
042			123970-7	GEAR ASSEMBLY B	1	PC.
043			144424-1	CARRIER COMPLETE B	1	PC.
044			211375-4	BALL BEARING 6805LLB	1	PC.
045			457529-1	GEAR CASE	1	PC.
046			221546-5	INTERNAL GEAR 47	1	PC.
047			221543-1	SPUR GEAR 13	3	PC.
048			144422-5	SPUR GEAR 20 COMPLETE	1	PC.
049			221544-9	SPUR GEAR 18	3	PC.
050			267774-8	LOCK WASHER	1	PC.
051			418003-4	MOTOR BRACKET	1	PC.
052			266490-9	TAPPING SCREW PT M2X6	3	PC.
053			629261-9	STATOR	1	PC.
054			619440-7	ROTOR	1	PC.
055			652069-6	FLAT HEAD SCREW M3X6	3	PC.
057			265095-2	PAN HEAD SCREW M3X20 W/RESIN	7	PC.
E01			808V40-2	CAUTION LABEL	1	PC.
E02			812G71-5	CAUTION LABEL	1	PC.

Item No	Type	Sub	Part No	Description	Qty	Unit
<b><u>ACCESSORIES</u></b>			<b>- See Catalogue or visit <a href="http://www.makita.ca">www.makita.ca</a> for more accessories -</b>			
A01			661432-2	USB CABLE	1	PC.
A02			765027-4	TORQUE ADJUST TOOL	1	PC.
A03			457531-4	LOCK NUT M28, RED	1	PC.
			457532-2	LOCK NUT M28, BLUE	1	PC.
			457533-0	LOCK NUT M28, YELLOW	1	PC.
			457530-6	LOCK NUT M28, BLACK	1	PC.
A04			424984-2	PLASTIC PROTECTOR, CLEAR	1	PC.
			424985-0	PLASTIC PROTECTOR, RED	1	PC.
			424986-8	PLASTIC PROTECTOR, BLUE	1	PC.
			424987-6	PLASTIC PROTECTOR, YELLOW	1	PC.
A05			281012-4	INSTALLING HOOK	1	PC.
A06			---	14.4V LI-ION BATTERY	1	PC.
A07			---	BATTERY CHARGER	1	PC.
A08			---	LI-ION BATTERY ACCESSORIES	1	PC.